

PLATINUM SERIES **salton**[®]

Compact Fabric Steamer and Iron



Instruction Booklet
Model: ST-1014

IMPORTANT SAFEGUARDS

When using electrical appliances, basic safety precautions should always be followed including the following:

1. Read all instructions.
2. Do not touch hot surfaces. Use handles or knobs.
3. To protect against electrical hazards, do not immerse cord, plugs, or the appliance in water or other liquid. Do not allow cord or hose to be crimped. Do not pull or stretch cord or hose around sharp corners or edges.
4. Do not overfill unit with Water. Fill to 27oz. (800 ml) maximum. Overfilling may result in burns from spilling water or possible electric shock. **NOTE:** Only fill Water Reservoir with water. Other cleaning agents will damage the unit and may cause injuries.
5. Do not leave unit unattended while plugged in or not in use.
6. Do not use appliance for other than its intended use.
7. Close supervision is necessary when any appliance is used by or near children, pets and plants. Steam produced by the unit is hot. Care must be taken to avoid burns or other injuries. Never point the nozzle at people or pets.
8. To reduce the risk of contact with hot water emitting from steam vents, check appliance before each use by holding the Steam Nozzle away from body and pressing the Steam Button. Do not operate if Steam Vents are blocked.
9. Do not operate any appliance with a damaged cord or plug or if the iron has been dropped or damaged. To avoid risk of electrical shock, do not disassemble unit. Return appliance to Salton for examination, repair or adjustment. See Warranty section.
10. Do not let cord touch hot surfaces.
11. Unplug from outlet when not in use and before cleaning. Allow to cool before putting on or taking off parts, and before cleaning the appliance.
12. Let appliance cool completely before putting away. Loop cord loosely around appliance when storing.
13. To reduce the likelihood of circuit overload, do not operate another high wattage appliance on the same circuit.
14. The lighted On/Off Switch should always be set to the 'Off' position before plugging or unplugging unit from wall outlet. Never yank cord to disconnect from outlet; instead, grasp plug and pull to disconnect.

15. Avoid contact with hot metal parts, hot water or steam. Keep hands, hair, and clothing away from these parts to prevent risk of injury to persons and or burns that could occur. Do not touch Ironing Plate or attempt to connect Fabric Brush while unit is in use. Use caution when you turn unit upside-down as there may be hot water in the Water Reservoir.
16. The use of accessories or attachments not recommended by Salton may cause hazards.
17. Do not attempt to change attachments while unit is emitting steam.
18. When finished using, place the Steam Nozzle onto the Water Reservoir Hook and secure in place with the Safety Chain. Place Water Reservoir on the Wall Mounted Base. Alternately, store in a cool dry place after the unit has cooled.
19. Always disconnect from the electrical outlet when filling with water or emptying and when not in use.
20. Do not use outdoors.
21. Extreme caution must be used when moving an appliance containing hot liquids.
22. If Heater Indicator Light does not illuminate, unit is not operating normally. Immediately disconnect from wall outlet. See Warranty section.

SAVE THESE INSTRUCTIONS

HOUSEHOLD USE ONLY

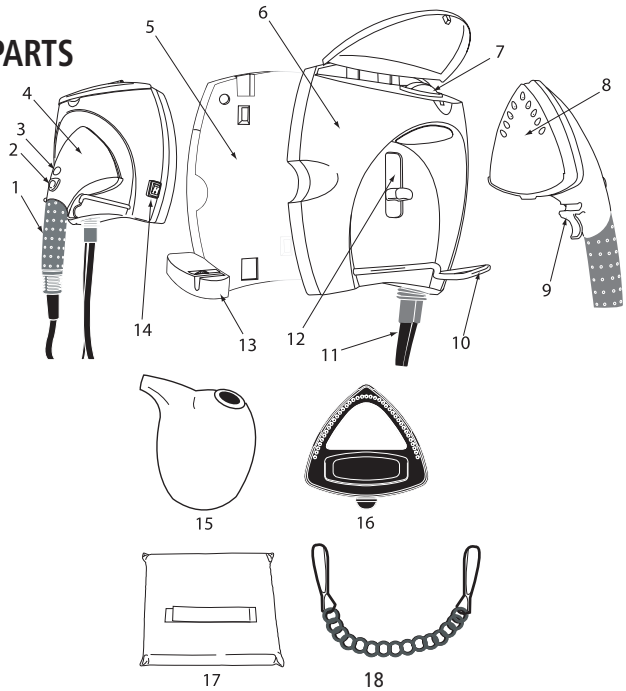
GROUNDING PLUG

To reduce the risk of electric shock this appliance has a grounded plug. (2 blades and 1 pin). If the plug does not fit fully into the electrical outlet contact a qualified electrician. Do not modify the plug in any way or use an adaptor.

BEFORE FIRST USE

Carefully inspect the packing material as some parts are shipped inside the Styrofoam packaging. Please check the Description of Parts below to be sure that you have all the parts before throwing away the packaging.

DESCRIPTION OF PARTS



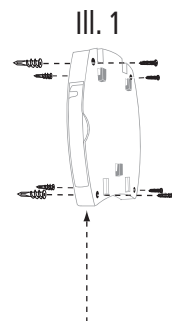
1. **Handle** - Designed to stay relatively cool and is safe to grasp.
2. **Steam Button** - Press and hold to produce a steady flow of steam
3. **Heater Indicator Light** - Illuminates when the unit is turned on, indicating that the heater is active.
4. **Steam Nozzle** - Emits a flow of hot, penetrating steam.
5. **Wall Mounting Base** - Attached to the wall as a permanent base station and space saver to keep the unit conveniently stored out of the way.
6. **Water Reservoir** - The reservoir in which water is stored for use by the unit.
7. **Water Reservoir Cap** - Remove to fill the Water Reservoir with water
8. **Ironing Plate** - Used as a conventional iron.
9. **Steam Nozzle Mounting Hook** - Secures the Steam Nozzle to the Water Reservoir
10. **Steam Nozzle Hanger** - Hanger for the Steam Nozzle Mounting Hook.
11. **Hose** - Carries the water from the water Reservoir to the Steam Nozzle.
12. **Water Level Window** - Lets the user see if the water level is low and may need refilling.

13. **Clothes Hanger Hook** - Extends out from the Wall Mounted Base and is used to hang clothes hangers for easy garment steaming.
14. **Lighted On/Off Switch** - Turns the unit 'On' and 'Off' and provides a clear indicator of whether or not the unit is powered on.
15. **Measuring Cup** - Designed to easily fill the unit with water.
16. **Fabric Brush** - Fits onto the Ironing Plate and delicately helps the steam smooth wrinkles from fabrics.
17. **Press Pad** - Fits on and protects your hand. Lets you support fabrics while thoroughly steaming them.
18. **Safety Chain** - Connect to the Steam Nozzle Holder to hold it securely in place.
19. **Clean or Steam/Iron Switch** (left side - not shown)
Switches the unit from the regular Steam/Iron to the Clean function.

ASSEMBLY INSTRUCTIONS

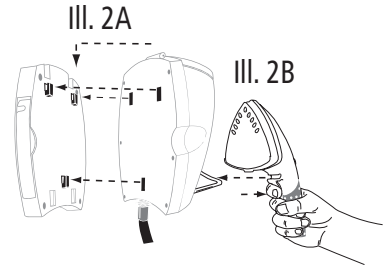
Attaching Wall Mounting Base to the Wall

1. Select a location for the Wall Mounting Base. Be sure that the Base is not placed over an electrical outlet and will not prevent a door from opening or closing properly and that the cords will not get closed in a door. Be careful that small children will not have access to the cords.
2. Mount the Wall Mounting Base between 36" (91cm) and 54" (137cm) from the floor. See Illustration 1.
3. The Fabric Steamer should be stored on the Wall Mounting Base when not in use.
4. Attach the Steam Nozzle to the Steam Nozzle Hanger by pressing the Steam Nozzle Mounting Hook with your finger and pushing the Steam



Nozzle onto the Steam Nozzle Hanger until it is secured in place. See Illustration 2A.

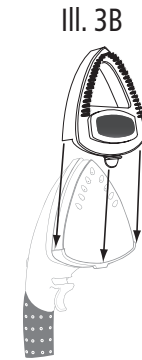
- Align the 3 holes in the back of the Water Reservoir with the 3 hooks protruding from the front of the Wall Mounting Base. Press the Water Reservoir onto the Wall Mounting Base. Once attached, slide the Water Reservoir down to secure onto the Wall Mounting Base. See Illustration 2B. **NOTE:** The Fabric Steamer can be used while on the Wall Mounting Base or removed and placed on a table or countertop.



Fabric Brush Attachment

The Fabric Brush attachment is used in conjunction with the Steam Nozzle. To attach this accessory:

- Unlock the Fabric Brush by turning the Lock clockwise until it stops (III. 3A)
- Slide the Fabric Brush over the Ironing Plate until it stops (III. 3B) **CAUTION:** Use care when attaching the Fabric Brush as the Iron Plate may be hot. Do not attempt to attach the Fabric Brush while the unit is emitting steam.
- Turn the Fabric Brush lock counterclockwise until it is locked. (III. 3C)
- The Fabric Brush is now fastened securely and you are ready to begin steaming.



HOW TO USE

Filling the Water Reservoir

- Press the On/Off Switch to the 'Off' position. Unplug the Power Cord.
- Open the Lid of the Water Reservoir and turn the Water Reservoir Cap about a quarter of a turn, counterclockwise. Remove.
- Using the Measuring Cup that is included with the unit, fill the Water Reservoir with a maximum of 27 oz. (800 ml) of cold water.

4. Replace the Water Reservoir Cap and close the top lid.
5. The Water Reservoir may be refilled as soon as it is emptied. Place the Steam Nozzle back onto the Steam Nozzle Hanger. Follow the instructions in #1 to #4 above.

CAUTION: Do not let the steamer operate with a dry Water Reservoir or damage to the unit could result.

Starting the Steamer

1. Attach the Fabric Brush, if desired.
2. Plug the Steamer into a properly grounded 3 pronged grounded outlet.
3. Turn the On/Off Switch to 'On'. Verify that the light on the switch is illuminated.
4. The Heater Indicator Light will illuminate indicating that the heater is active.
5. Ensure that the Cleaning Switch is pressed down to 'Iron/Steam' position.
6. After approximately 2 minutes of heating time, the unit will be ready for steaming.
7. Direct the Steam Nozzle towards the material you wish to steam. **CAUTION:** Always be sure that the Steam Nozzle and any other attachments are pointed away from yourself, other people, pets and plants when steam is being emitted.
8. Press and hold the Steam Button. After a few seconds, steam will begin emitting from the Steam Nozzle.

NOTE: When first holding the Steam Button the unit may make a pumping sound as air and water are pushed through the Hose. This is normal. The pumping sound will fade once the Hose is allowed enough time to fill with a steady flow of water (approximately 20 - 30 seconds). If the pumping sound resumes during use, the water level in the Water Reservoir is likely running low - look through the Water Level Window to confirm. Adding water to Reservoir should eliminate the sound. If the sound persists even when the Reservoir is full, contact the Customer Service for assistance. See Warranty page for details.

Steaming Garments

1. To steam a garment, place it on a clean, rush-free clothes hanger and place the hanger on the Clothes Hanger Hook. **CAUTION: Any garments placed on the Clothes Hanger Hook should not exceed 8 lbs. (3.6 kgs).**

2. Use a slight back and forth motion while directing the Steam Nozzle towards the material you wish to steam.
3. Move the Steam Nozzle away from the garment and smooth the fabric with your free hand.
4. Repeat as necessary until the garment is wrinkle-free.
5. When finished using the Fabric Steamer & Iron, immediately turn the On/Off Switch to the 'Off' position and unplug the power cord from the electrical outlet.

Ironing Garments

In some instances, pressing a crisp crease or iron collars or cuffs is needed and can be easily accomplished using the iron feature.

1. Remove the Fabric/Lint Brush.
2. If the unit has not recently been in use, allow the Ironing Plate to heat up for approximately 2 minutes.
3. To use the Press Pad, slide the Velcro strap onto your hand. Place fabric over the Press Pad. Iron fabric while pressing it firmly against the pad. Use the iron to press crisp creases, collars or cuffs. If a steam burst is desired, simply press the Steam Button.
4. You can also use a folded towel placed on a table or countertop instead of the Press Pad. **NOTE:** Make sure that the towel is thick enough so that the heat does not transfer to the table or countertop.
5. When finished using the Fabric Steamer & Iron, immediately turn the On/Off Switch to the 'Off' position and unplug the power cord from the electrical outlet.

HELPFUL HINTS:

- Curtains and draperies can be steamed while hanging.
- To remove wrinkles from towels, handkerchiefs and napkins, drape them over a rod or towel rack and gently steam.
- Heavier fabrics may require repeated steaming.
- To remove stubborn wrinkles, steam both sides of the fabric.
- Be especially careful when steaming delicate fabrics and those likely to be damaged by water spotting.
- The best way to avoid mineral build-up caused by high mineral content in water is to use de-mineralized or distilled water in the unit.

CLEANING AND STORAGE

Cleaning the Ironing Plate

1. Switch the On/Off Switch to the 'Off' position and unplug from the wall outlet. Allow the Ironing Plate to cool down completely, at least 30 minutes.
2. Clean the outside of the unit using a damp cloth, with mild soap.
3. Scale and other residue can be wiped off the Ironing Plate with a damp cloth or non-abrasive pad.
4. Wipe with a clean cotton cloth.

Removing Mineral Build-Up

Mineral build-up is caused by a high mineral content in many municipal water supplies. Mineral residue inside the internal pipes and heater can cause intermittent steaming or, in some cases, no steaming at all. This mineral build-up may reduce the life of your Fabric Steamer and Iron and should be cleaned out regularly. Follow the directions below to flush out the mineral deposits.

To reduce or eliminate the occurrence of mineral build-up, we recommend the use of de-mineralized or distilled water in the unit. If you are unable to use de-mineralized or distilled water, we recommend you follow the procedure below after every 3 – 4 uses.

1. Fill the Water Reservoir with at least 16 oz. (473 ml) of water.
2. If unit is already powered on and heated, proceed to #3. If not, plug power cord into wall outlet and set On/Off Switch to 'ON' position. Allow the unit to heat for 2 minutes.
3. Press the Cleaning Switch on the left side of the Base to 'CLEAN'.
4. Hold the Steam Nozzle over a sink or tub, then press and hold the Steam Button. After a few seconds the Nozzle will begin producing a strong flow of steam and will begin spraying small amounts of water.

CAUTION: To avoid burns or other injury, use care when operating unit in the 'CLEAN' function as water sprayed by the Steam Nozzle is hot. Be sure that the Nozzle is pointed in a safe direction, away from yourself, other people, pets or plants.

5. Keep the Steam Button pressed and allow unit to continue cleaning for at least 2 minutes.
NOTE: More time may be necessary if the unit has not been cleaned regularly. An additional minute or two is recommended if it has been more than 3 – 4 uses since the last cleaning.
6. Once cleaning is complete, release the Steam Button and thoroughly shake the Steam Nozzle over a sink or tub to remove excess water.
7. To set back to the normal steaming/iron function, press the Cleaning Switch to the Iron position.

Troubleshooting

Problem	Cause	Solution
Excessive amounts of water being sprayed from the Steam Nozzle	<ul style="list-style-type: none"> • Cleaning Switch is set to 'CLEAN' mode 	<ul style="list-style-type: none"> • Set Cleaning Switch to the Iron position for normal use
Unit produces loud pumping sounds when the Steam button is pressed	<ul style="list-style-type: none"> • Air in Hose • Low water level in the Water Reservoir 	<ul style="list-style-type: none"> • If unit has not been used for a long period the Hose will fill up with air. When the Steam Button is pressed the air must be forced out as water is pumped in • Add water to the Water Reservoir

Troubleshooting

Problem	Cause	Solution
The unit fails to heat up. Heater Indicator Light does not illuminate.	<ul style="list-style-type: none"> • Unit is not plugged in. • Household circuit breaker/ground fault interrupter has tripped or blown a fuse. 	<ul style="list-style-type: none"> • Plug into an electrical outlet. • Reset circuit breaker/ground fault interrupter or replace fuse. If you need assistance, contact a licensed electrician.
Unit heats up but fails to steam. Heater Indicator Light does illuminate.	<ul style="list-style-type: none"> • Heat up time has not elapsed. • Water Reservoir is empty. • Steam Button is not being pressed. • Mineral build-up in unit. 	<ul style="list-style-type: none"> • Allow the unit to heat up for 2 minutes. • Refill Water Reservoir. See instructions in 'Filling the Water Reservoir' section. • Press and hold the Steam Button for a few seconds for steam to begin flowing. • Follow 'Removing Mineral Build-Up' procedure. If problem persists, contact Customer Service.
Steam output is intermittent.	<ul style="list-style-type: none"> • Steam Button not being pressed continuously. • Mineral build-up in unit. 	<ul style="list-style-type: none"> • For continuous steam, press and hold the steam button. • Follow 'Removing Mineral Build-Up' procedure.
Loud pumping sound when Steam Button is pressed.	<ul style="list-style-type: none"> • Low water level in Water Reservoir. 	<ul style="list-style-type: none"> • Follow the procedure in the 'Filling the Water Reservoir' section.

A short supply cord is provided to reduce the hazards of becoming entangled in or tripping over a long cord. Extension cords may be used if care is exercised in their use. If an extension cord is used, the marked electrical rating of the detachable power-supply cord or extension cord should be at least as great as the electrical rating of the appliance. If the appliance is of the grounded type, the extension cord should be a grounded 3-wire cord. The extension cord should be arranged so that it will not drape over the counter top or table top, where it can be pulled on by children or tripped over.

LIMITED WARRANTY

Salton Canada warrants that this appliance shall be free from defects in material and workmanship for a period of one year from the date of purchase. During this 'in-warranty' period, defective products will be repaired or replaced at the discretion of the retailer and/or Salton Canada. This warranty covers normal domestic usage and does not cover damage which occurs in shipment or failure which results from alteration, accident, misuse, abuse, glass breakage, neglect, commercial use or improper maintenance.

A defective product should be returned to the original place of purchase within the retailer's stipulated return/exchange period*. If you are unable to have a defective product replaced under warranty by the retailer, please check our website at "www.salton.com" for the service centre nearest you. You may also contact us for assistance by mail, e-mail, fax or telephone as listed below.

To ensure prompt 'in-warranty' service securely package and return the product to us prepaid. Be sure to include the original proof of purchase and a description of the defect along with your address and postal code.

For repairs not covered by the warranty, please contact us for assistance.

SALTON CANADA

Customer Service Department
81A Brunswick,
Dollard-des-Ormeaux,
Quebec, Canada H9B 2J5
website: www.salton.com
E-mail: service@salton.com
Fax: 514-685-8300
Tel: 514-685-3660

* Return/exchange policies at each retailer vary and may differ from the SALTON Canada 1 year limited warranty period.