

salton®

Water Dispenser



Instruction Booklet

Model: WD-1044

IMPORTANT SAFEGUARDS

When using electrical appliances, basic safety precautions should always be followed including the following:

1. Read all instructions.
2. Do not touch hot surfaces. Use handles or knobs. Do not touch steam vent.
3. Do not cover the steam vent.
4. To protect against electrical hazards, do not immerse cord, plugs, or the appliance in water or other liquid.
5. Close supervision is necessary when any appliance is used by or near children.
6. Unplug from outlet when not in use and before cleaning. Allow appliance and water to cool before opening or putting on or taking off parts, and before cleaning the appliance.
7. Do not operate any appliance with a damaged cord or plug or after the appliance malfunctions, or has been damaged in any manner. Return appliance to Salton for examination, repair or adjustment. See Warranty section.
8. The use of accessories or attachments not recommended by Salton may result in fire, electric shock or personal injury.
9. Do not let cord hang over edge of table or counter, or touch hot surfaces.
10. Do not place on or near a hot gas or electric burner, or in a heated oven.
11. Always attach plug to appliance first, then plug cord into the wall outlet. To disconnect, turn any control to 'OFF', then remove plug from wall outlet.
12. Extreme caution must be used when moving an appliance containing hot liquids.
13. Do not use appliance for other than intended use. Do not leave unit unattended while in use.
14. Do not use outdoors.
15. Do not open Cover during the boiling cycle. This may cause scalding.
16. Do not tilt or knock the appliance. Hot water may spill out from the spout or steam vent causing scalding or personal injury.
17. **DO NOT** fill with other liquids except water. This may damage the appliance.

SAVE THESE INSTRUCTIONS

HOUSEHOLD USE ONLY

GROUNDING PLUG

To reduce the risk of electric shock this appliance has a grounded plug (2 blades and 1 pin). If the plug does not fit fully into the electrical outlet contact a qualified electrician. Do not modify the plug in any way or use an adaptor.

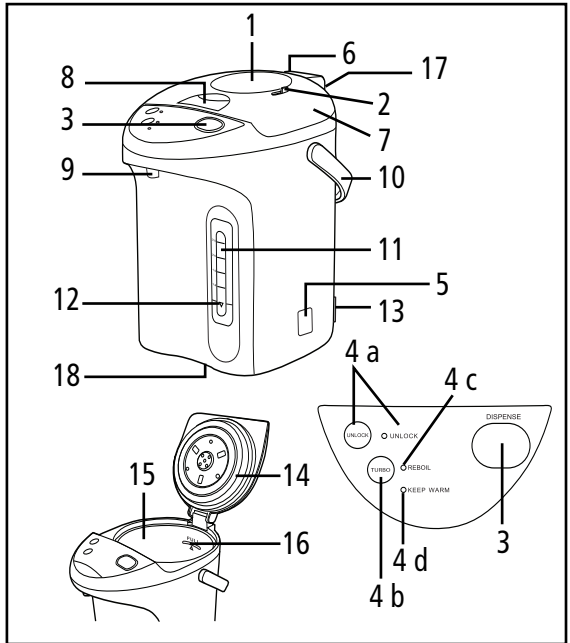
BEFORE FIRST USE

1. Read all instructions carefully and keep them for future reference.
2. Remove all packaging.
3. Add 1 litre/quart of water and follow the directions in the How to Use section to boil water. Dispense the water. Water boiled for the first time should be discarded.

NOTE: When you first use the Hot Water Dispenser a slight smell of plastic may be noticed. This will fade gradually. This does not affect the quality of the water.

DESCRIPTION OF PARTS

1. Manual Pump
2. Manual Pump Lock
3. Electric Pump
4. Control Panel
 - a. Electric Pump Unlock Button and Indicator Light
 - b. Turbo Button
 - c. Boil Indicator Light
 - d. Keep Warm Indicator Light
5. Master Switch
6. Steam Vent
7. Cover
8. Cover Release Lever
9. Water Outlet
10. Handle
11. Water Level Indicator
12. Refill Mark
13. Power Cord Receptacle
14. Gasket
15. Water Tank
16. MAX Marking
17. Cover Removal Button (back of hinge) (See III. 3)
18. Swivel Base



III. 1

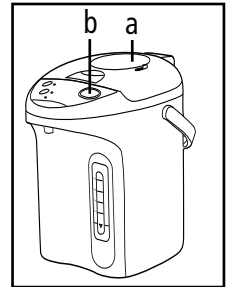
IMPORTANT: The Electric Pump Auto Locking System is always active when the power is on. When dispensing water by pushing the Electric Pump Button you must first press the 'UNLOCK' Button to disable the Electric Pump Auto Locking System. Then you can dispense the water when the 'UNLOCK' indicator light is lit. The Electric Pump Auto Locking System will reactivate 5 seconds after you release the Electric Pump Button and the 'UNLOCK' indicator light will turn off.

HOW TO USE

1. Open the Cover by raising the Cover Release Lever and lifting gently. Fill with Water Tank with fresh cold water. Do not fill above the MAX marking. Maintain the water level above the REFILL mark on the Water Level Window. **NOTE:** Do not splash water on the Control Panel.
2. Close the Cover firmly. The Cover will click into position when it is properly closed.
3. Connect the Power Cord to the Water Dispenser then plug into the wall outlet. Move the Master Switch to the ON position. The 'Boil' Indicator Light will light up until the water has boiled. **NOTE:** The 'Unlock' Indicator Light will light up but go off after 5 seconds.
4. Once the water has boiled the 'Boil' indicator light will go out and the 'Keep Warm' Indicator Light will light up.
5. The Master Switch can be switched to either of 2 positions:
 - a. ON position to use either of the 2 pumps.
 - b. OFF position if you wish to keep water hot but disable the Electronic Control Panel and the Electronic Pump. Only the Manual Pump will operate. Water will be kept hot for approximately 15 hours.
6. To dispense water:

- a. Manual Pump Method (See III. 2):

Move the Manual Pump Lock to the UNLOCK position. To dispense water, place a cup or other suitable container under the Water Outlet and push down on the Manual Pump. When the water has been dispensed move the Manual Pump Lock back to the Lock position.



III. 2

- b. Electric Pump Method (See III. 2):

Press the UNLOCK button on the Control Panel and the Unlock Indicator Light will light up. To dispense water, place a cup or other suitable container under the Water Outlet and push down on the Electric Pump Button. The Auto Locking System will switch to Lock 5 seconds after the Electric Pump Button is released. **NOTE:** To use the Electric Pump the Master Switch must be in the ON position.

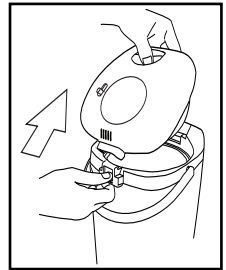
7. To reboil water press the 'TURBO' Button.
8. If the water level goes below the Refill Mark, open the Cover and add cold water. Once the water level passes the Refill mark, the Boil Indicator Light will illuminate.

IMPORTANT NOTES:

- **DO NOT** open the Cover when the 'Boil' Indicator Light is on.
- **DO NOT** place your hand in front of the Cover or over the Steam Vent when opening as there will be escaping steam. Swivel the unit sideways so that when opening the Cover your hand is to the **SIDE** of the Dispenser.

CARE AND CLEANING

1. Unplug power cord from the wall outlet and allow to cool. For faster cooling, dispense remaining water then unplug from the wall outlet, open cover and allow the Dispenser to cool.
2. To remove the Cover open to a 45° angle, press down on the Cover Release Button at the back of the hinge and gently pull the Cover forward. **IMPORTANT:** The Water Dispenser and contents must be cool.
3. To remove any discolouration of the inner pot from minerals found in water follow the procedure below:
 - a. Cut 2 lemons in halves and squeeze the juice into the Water Tank. Fill with cold water. Boil then leave the water/lemon in the Water Dispenser for one hour.
 - b. Unplug from the wall outlet and allow to cool. Remove Cover and pour out the water.
 - c. Use a damp sponge to wipe the Water Tank.
 - d. To remove the lemon smell, refill with water and boil. Discard the water.
NOTE: Do not use dishwashing liquid or abrasive cleansers to clean the Water Tank.
4. Check the Gasket inside the Cover periodically. If it shows signs of wear, contact the Salton Canada Service Department to purchase a replacement Gasket. The contact details are listed in the Warranty section.



III. 3

A short supply cord is provided to reduce the hazards of becoming entangled in or tripping over a long cord. Extension cords may be used if care is exercised in their use. If an extension cord is used, the marked electrical rating of the detachable power-supply cord or extension cord should be at least as great as the electrical rating of the appliance. If the appliance is of the grounded type, the extension cord should be a grounded 3-wire cord. The extension cord should be arranged so that it will not drape over the counter top or table top, where it can be pulled on by children or tripped over.

LIMITED WARRANTY

Salton Canada warrants that this appliance shall be free from defects in material and workmanship for a period of one year from the date of purchase. During this 'in-warranty' period, defective products will be repaired or replaced at the discretion of the retailer and/or Salton Canada. This warranty covers normal domestic usage and does not cover damage which occurs in shipment or failure which results from alteration, accident, misuse, abuse, glass breakage, neglect, commercial use or improper maintenance.

A defective product should be returned to the original place of purchase within the retailer's stipulated return/exchange period*. If you are unable to have a defective product replaced under warranty by the retailer, please check our website at "www.salton.com" for the service centre nearest you. You may also contact us for assistance by mail, e-mail, fax or telephone as listed below.

To ensure prompt 'in-warranty' service securely package and return the product to us prepaid. Be sure to include the original proof of purchase and a description of the defect along with your address and postal code.

For repairs not covered by the warranty, please contact us for assistance.

salton[®]

SALTON CANADA

Customer Service Department

81A Brunswick

Dollard-des-Ormeaux

Quebec, Canada H9B 2J5

Website: www.salton.com

E-mail: service@salton.com

Fax: 514-685-8300

Tel: 514-685-3660

* Return/exchange policies at each retailer vary and may differ from the Salton Canada 1 year limited warranty period.